

Northeast and Midwest Joint
Equipment Management Meeting
June 16, 2015 St. Louis, Missouri



Agenda

- * Iowa DOT Overview
- * Salt Summary
- * Winter Projects

Iowa DOT Overview

- ❑ Budget
 - \$43 Million snow/ice budget

- ❑ 109 Maintenance facilities

- ❑ Staffing
 - 1,051 Permanent staff
 - 462 Seasonal staff

- ❑ Staff- Hours (as of 26 Feb, 2015)
 - Total snow/ice hours = 278,052 hours
 - 5 year avg = 409,090 hours

Iowa DOT Overview

□ Primary Roadway Responsibilities:

- 24,122 lane miles of roadway
- 3,687 lane miles of Interstate (ramps included)
- 9,403 centerline miles of roadway

□ Equipment

- 892 Snowplows
- 53 Motor graders
- 133 Endloaders
- 12 Heavy Duty Self propelled Snow Blowers
- 76 Snow Blower attachments for Loaders/Tractors
- 12 Tow Plows

Salt Summary

As of 13 March 2015

Summary	Total Capacity (Tons)	Qty on Hand (Tons)	On Hand % of Capacity	Tons used during FY15
Statewide	221,250	212,317	96%	117,568
District 1	36,550	34,854	95%	19,888
District 2	32,350	34,933	108%	17,023
District 3	34,700	34,361	99%	13,353
District 4	36,325	29,275	81%	17,481
District 5	35,625	33,384	94%	22,036
District 6	45,700	45,511	99%	27,787

- ✓ 5 year Avg Salt usage – 166,545 tons
- ✓ Avg price per ton (2015 Contract) = \$75.00

Material Summary

As of 13 March 2015

	Salt Brine (gals)	Calcium Chloride Brine (gals)	Sand (tons)
Used year to date	19,275,094	64,836	14,014
5 year avg use	17,816,775	45,924	25,028
% of 5 year avg use	108%	141%	56%

Plow Cam Project & Track A Plow Website

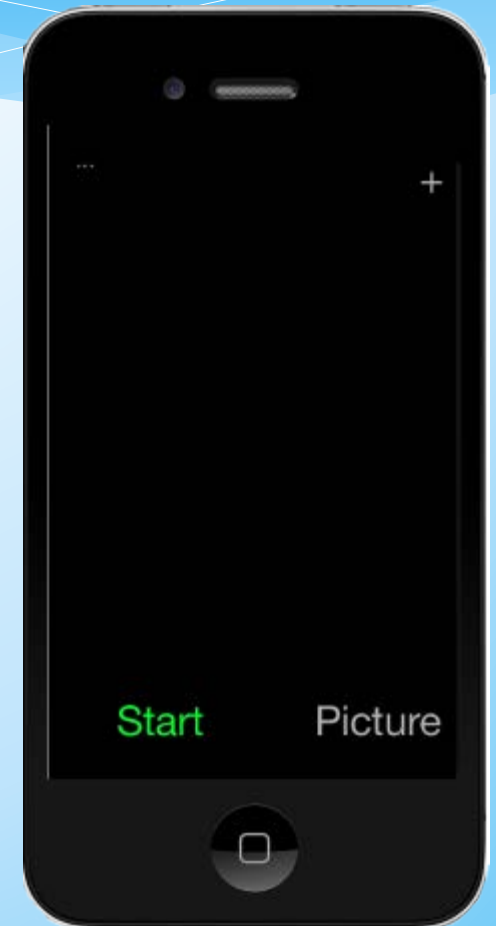


Plow Cam & Track A Plow

- Identify and implement readily available technology to capture, upload, and geographically display photos taken from snow plow vehicles during winter operations.

Camera Criteria

- * Quality of photo
- * Availability of hardware
- * Availability of software/application
- * Multi-functionality
- * Simplicity
- * Unobtrusiveness
- * Connectivity and data transfer
- * Cost



Part List

Fuse

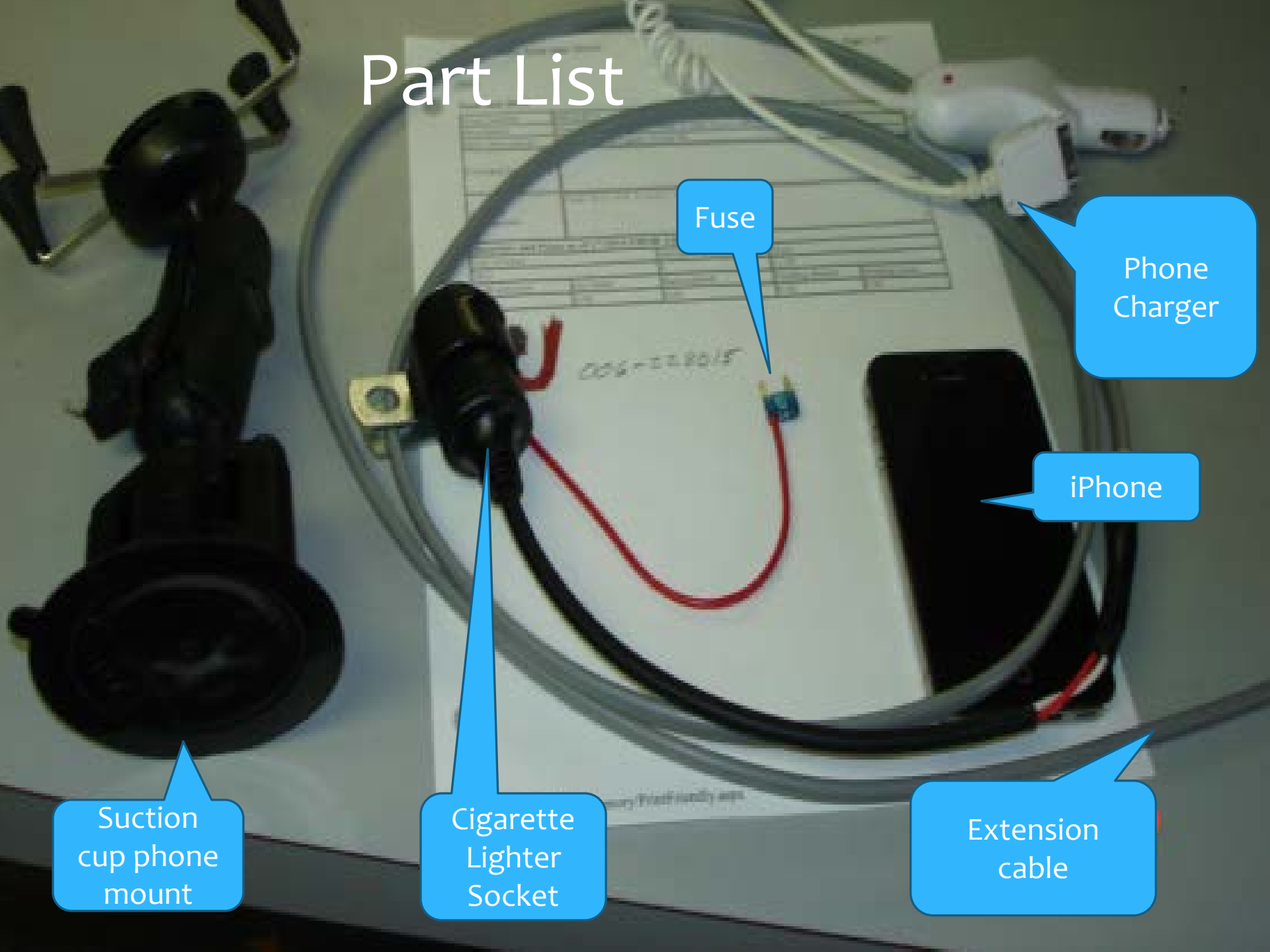
Phone
Charger

iPhone

Extension
cable

Cigarette
Lighter
Socket

Suction
cup phone
mount



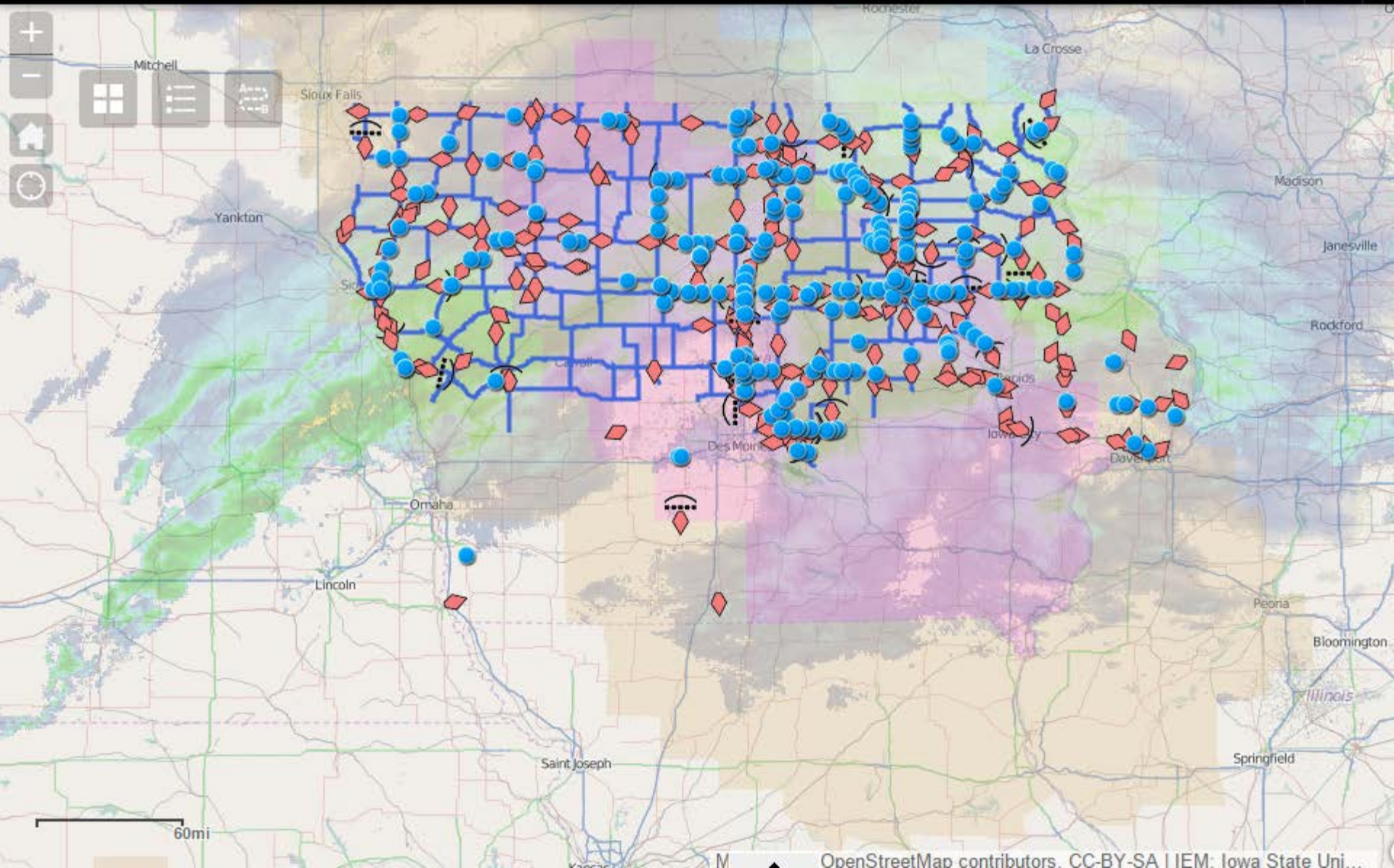


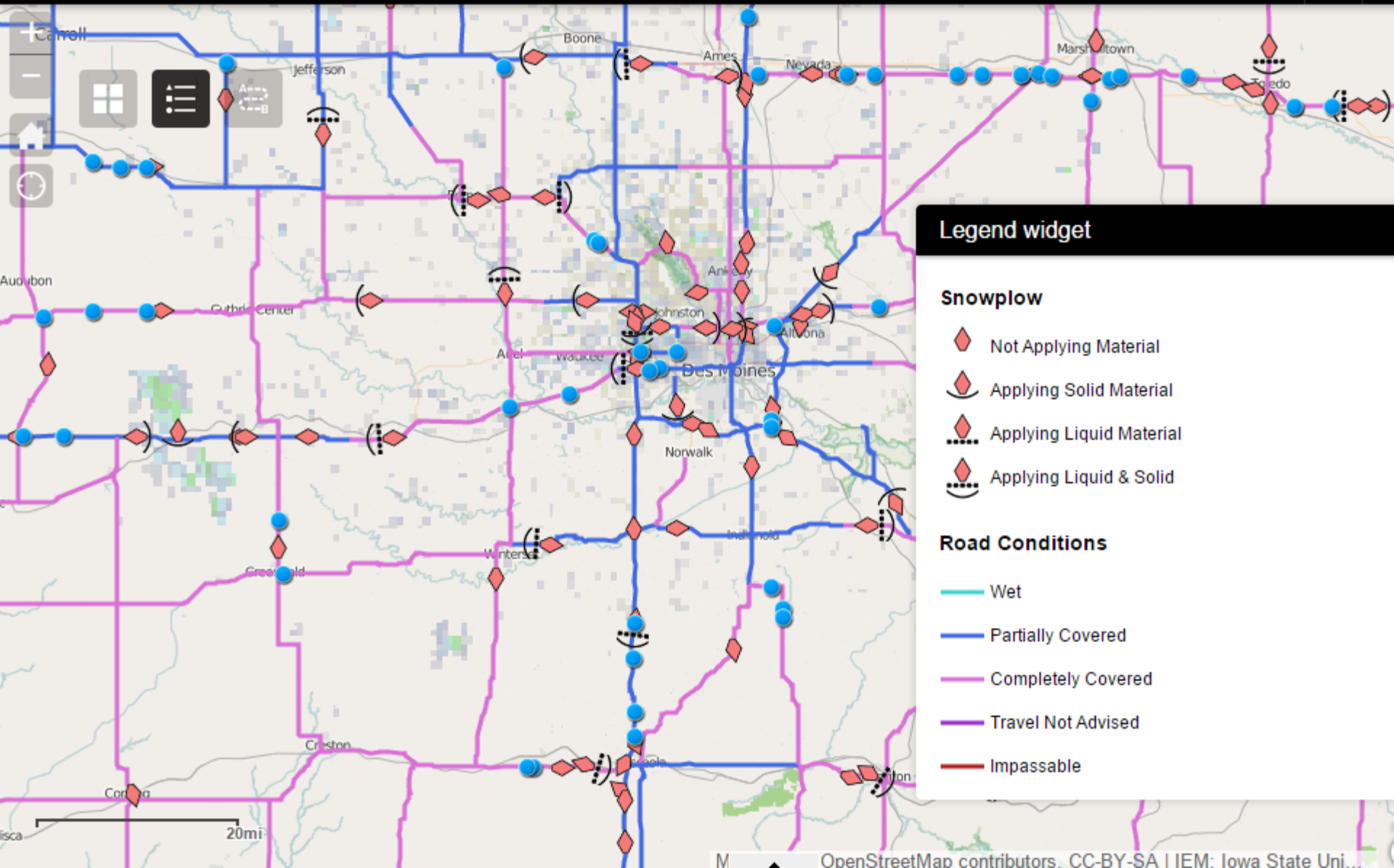




Track a plow

Winter Travel Information 511





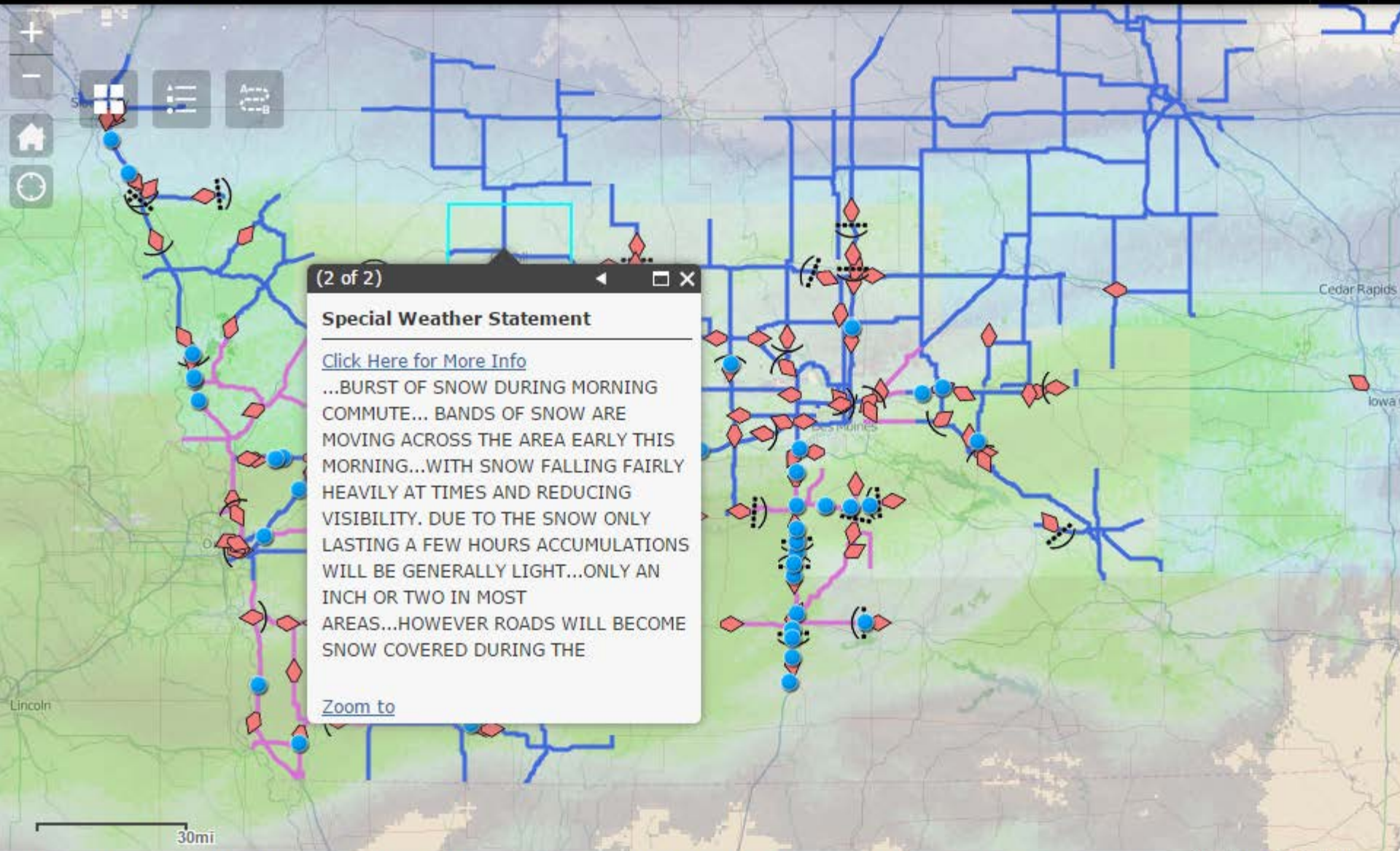
Legend widget

Snowplow

- Not Applying Material
- Applying Solid Material
- Applying Liquid Material
- Applying Liquid & Solid

Road Conditions

- Wet
- Partially Covered
- Completely Covered
- Travel Not Advised
- Impassable



(2 of 2)

Special Weather Statement

[Click Here for More Info](#)

...BURST OF SNOW DURING MORNING COMMUTE... BANDS OF SNOW ARE MOVING ACROSS THE AREA EARLY THIS MORNING...WITH SNOW FALLING FAIRLY HEAVILY AT TIMES AND REDUCING VISIBILITY. DUE TO THE SNOW ONLY LASTING A FEW HOURS ACCUMULATIONS WILL BE GENERALLY LIGHT...ONLY AN INCH OR TWO IN MOST AREAS...HOWEVER ROADS WILL BECOME SNOW COVERED DURING THE

[Zoom to](#)



NORTH WEST
1 - 50
21 - 50
MAY 15, 2012

WEST STREET
PART OF DELAWARE



Track A Plow





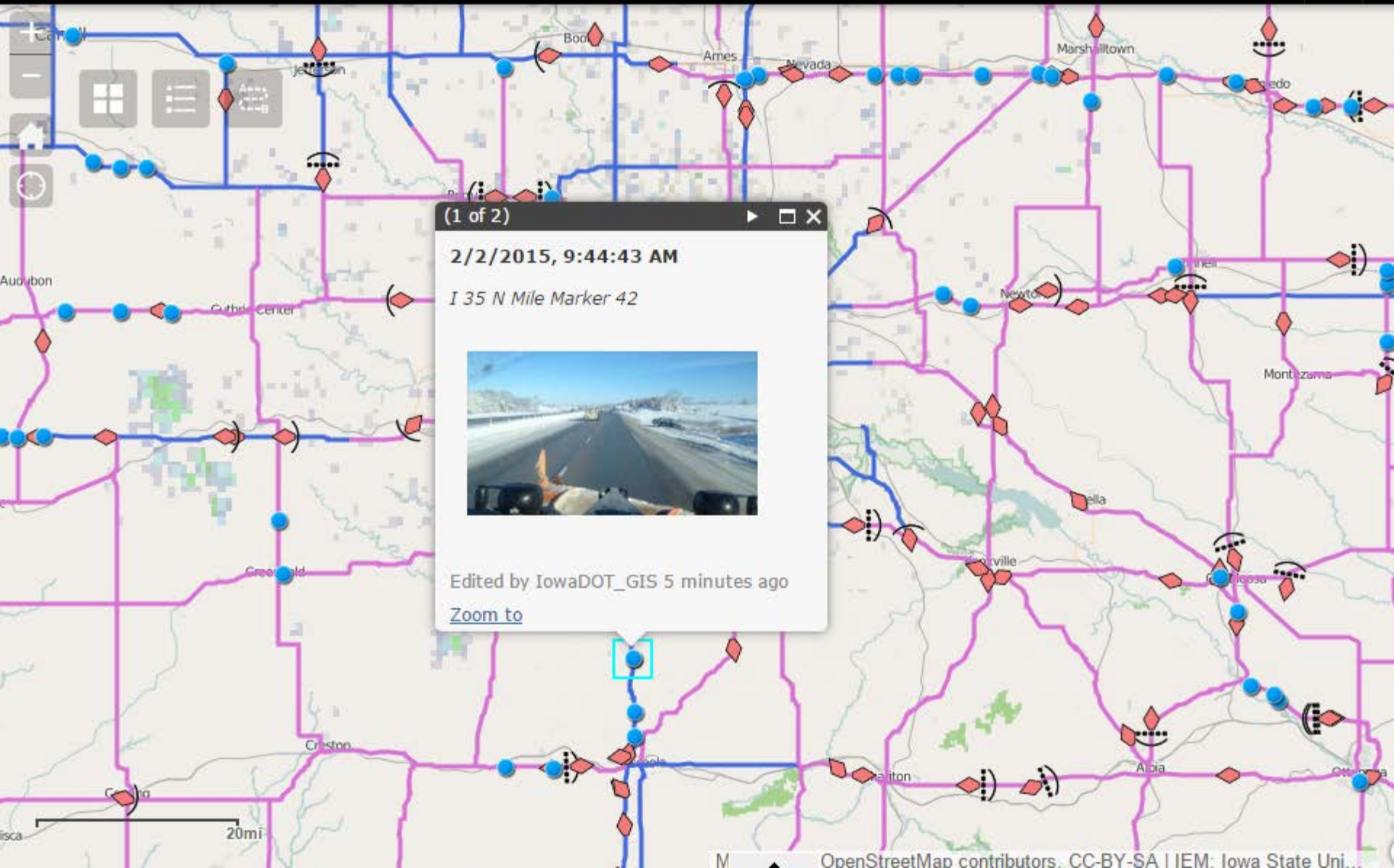


35 NORTH
Des Moines



Track a plow


Winter Travel Information 511



(1 of 2)

2/2/2015, 9:44:43 AM

I 35 N Mile Marker 42



Edited by IowaDOT_GIS 5 minutes ago

[Zoom to](#)



29 NORTH
Green Park
← ONLY →

29 NORTH
Wendy Park
Green City
←

29 NORTH
Couch/Broffs
→

STAY BACK
50 FEET







TRAFFIC
KEEP
RIGHT

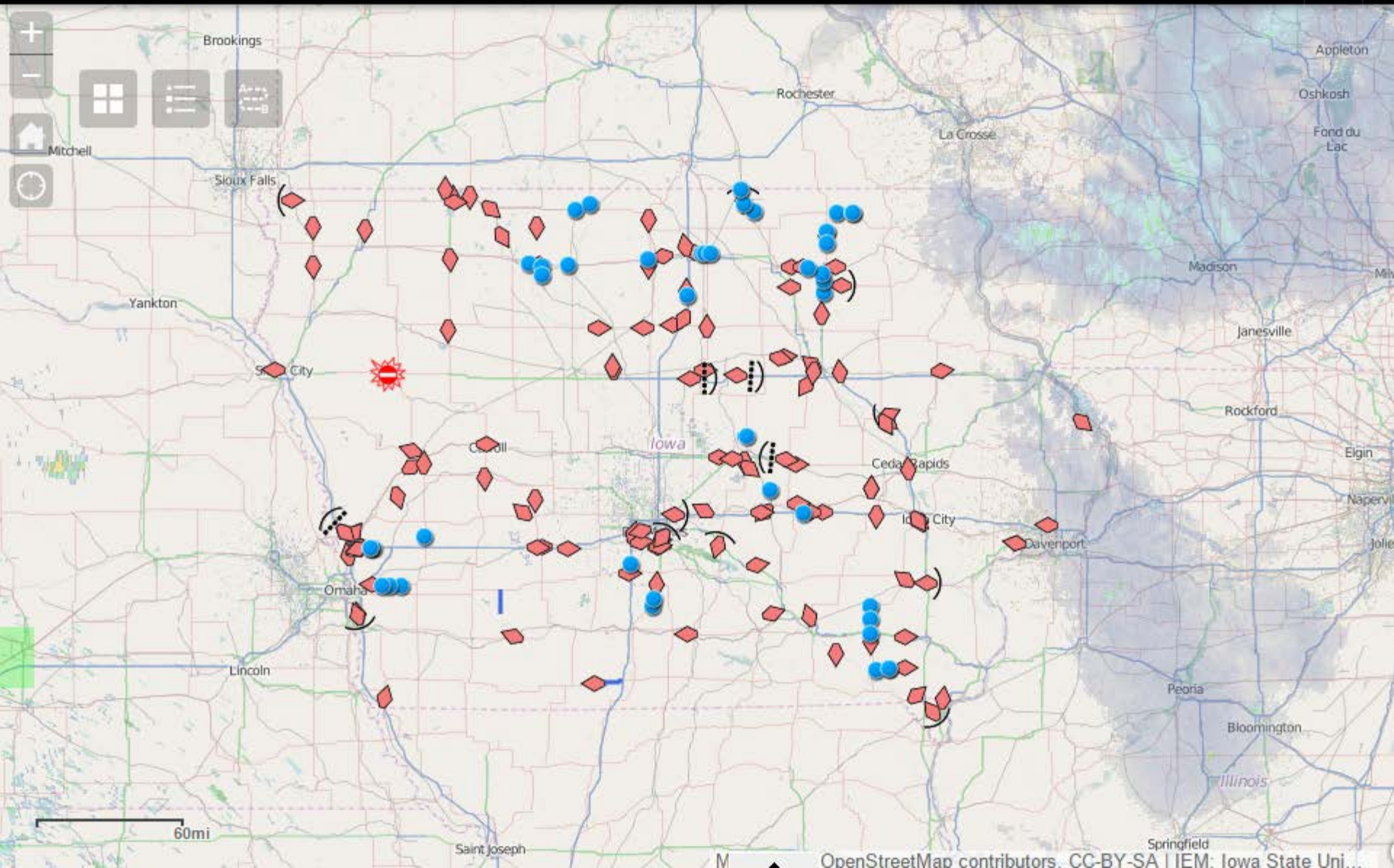




2679

Track a plow

Winter Travel Information 511







Questions??